

ReLuminate Dual

Twin-Head 100% Off-Grid Lighting Unit

Data Sheet
26Data-
0001.1



Overview

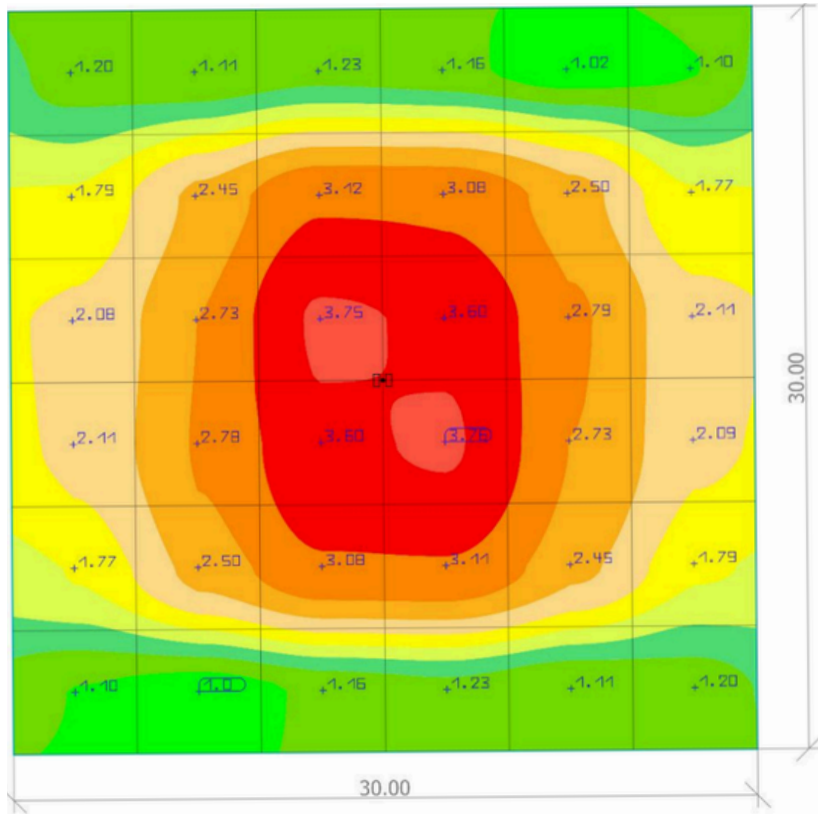
The ReLuminate dual-head unit is one of the most flexible, reliable and highly engineered off-grid lighting solutions in the world. Designed to provide true zero-carbon lighting output in all exposed outdoor locations by drawing power from nature and removing the need for costly power infrastructure installations. Ideal for applications such as car park centres, walkways, and open areas requiring wider light distribution, the ReLuminate Dual provides superior coverage from a single unit. It delivers dependable, high-performance lighting you can rely on, every time.

Benefits

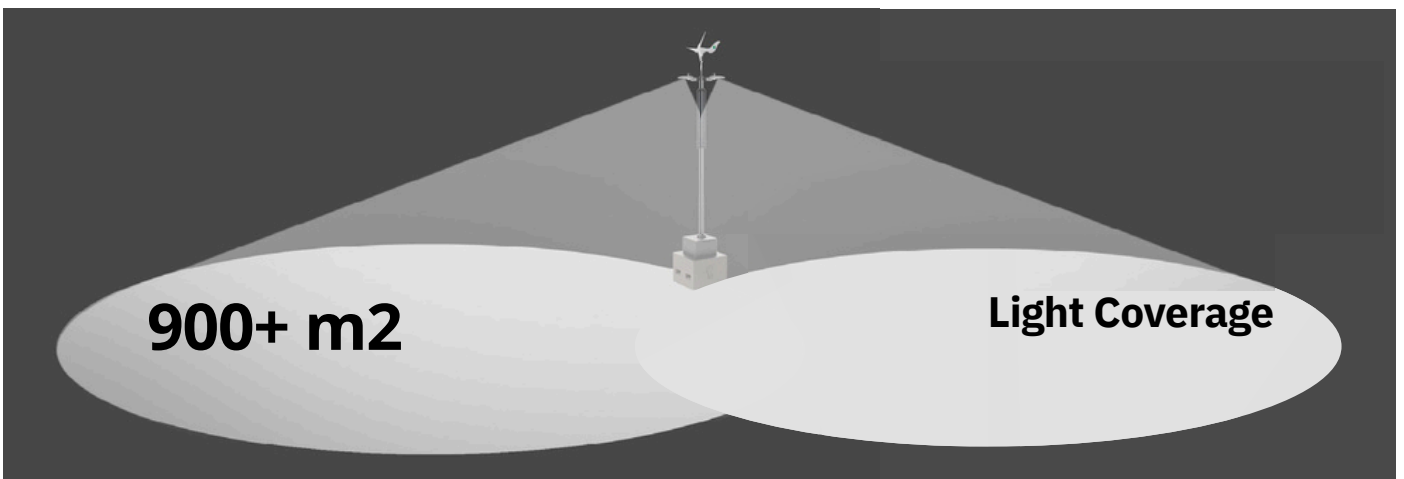
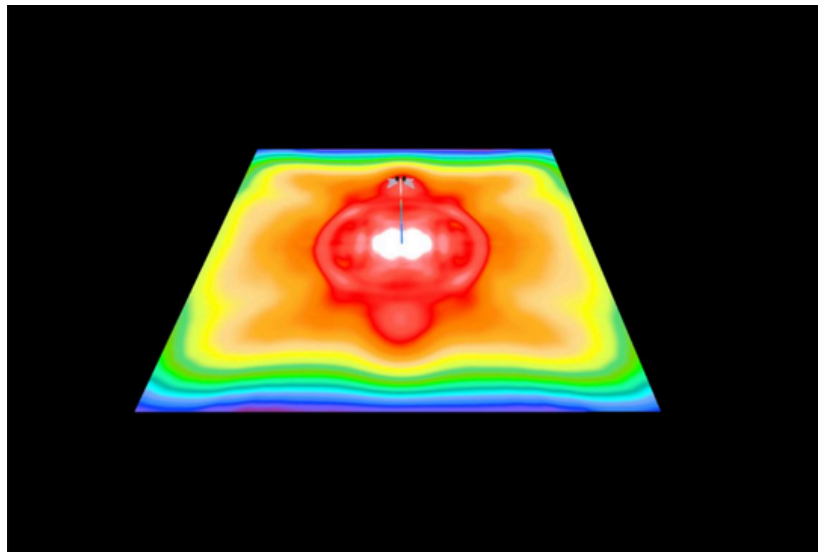
- Carbon zero - Zero grid energy usage
- Vertical solar - Maximise solar gain all year and self-cleaning.
- Wind turbine - Ensuring all year round up time when light is most needed.
- Efficient LED - Leading technology to maximise output efficiencies.
- Battery management - Reliable long life heated battery to maximise capacity.
- Movement sensor - Give maximum light output when needed otherwise conserves.
- Five year warranty.

Specifications

- Adjustable light head
- Dual 10W 1376 lumen 24VDC LED high efficiency light heads
- Movement sensor
- Luminaire height options from 5.0m to 8.0m height - standard height 6.0m
- Wide beam PIR movement sensor
- Ground mount options - flange mount or in ground plant mount (for fixed applications)
- Concrete block mounted (for temporary applications)
- Illumination > 900m2
- Option for auxillary power supply.
- Light temperature variation possible for wildlife friendly zones



Car Park @6m High



Northpoint, Compass Park,
 Bodiam, East Sussex, TN32 5BS
 T: 01580313221 E: enquiries@ventavolt.com W: ventavolt.com

ventaVolt
 Off-grid solutions